

TB0025 Trombone Cylinder Slide Valve Change

Date: 28/11/01

In order to add the extra option of cylinder slide onto the T/B unit, the Danfoss Valve has been changed.

The build of the valve does not change but which crane base end the Open Centre and Closed Centre valves are mounted on has changed.

"Open Centre" valves have the LS (load sensing) connection entering the pump side module and a LX connection exiting the end plate. They are marked with part No 157B5110

"Closed Centre" valves have the LS (load sensing) connection entering the pump side module only. They are marked with part No 157B5111

Valve part No 157B5110 is fitted to the **Front** crane.

Valve part No 157B5111 is fitted to the **Rear** crane.

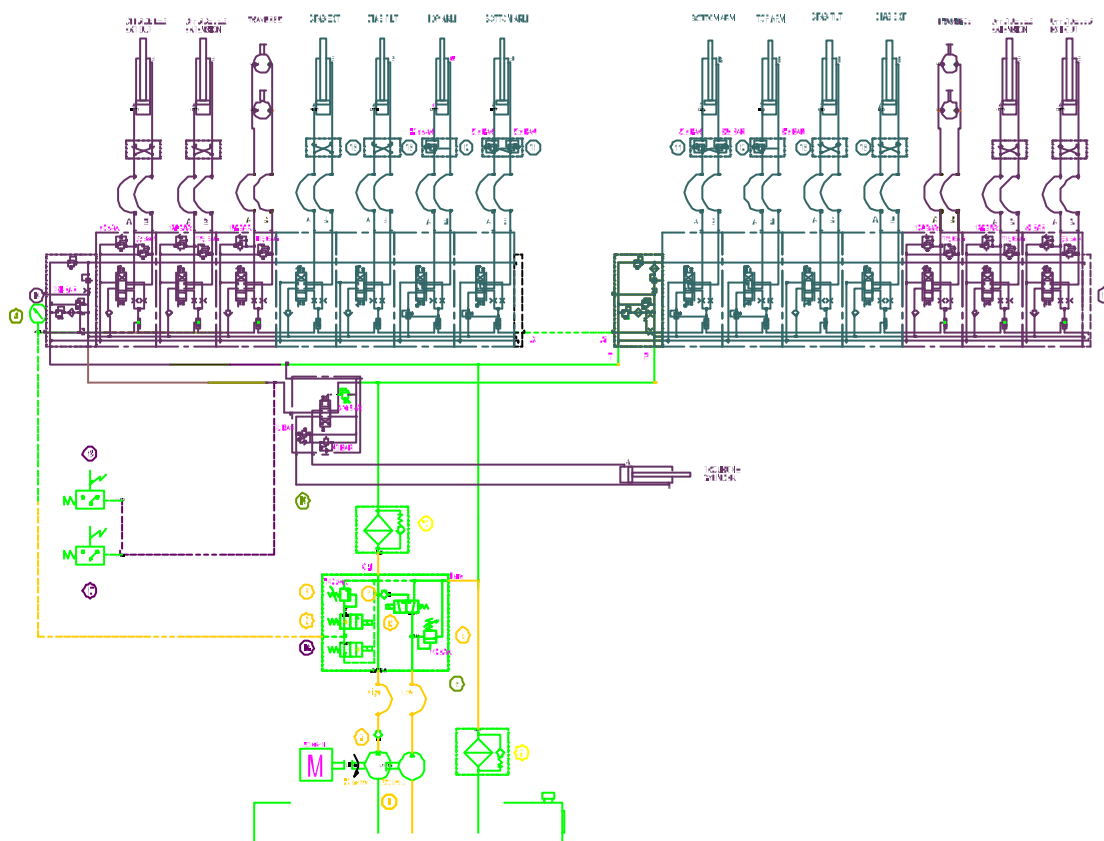


These Units are equipped with two Danfoss PVG 32 control valves, interconnected by a load sensing line. These control valves differ in that the pump side modules (where the pump oil enters the valve and the tank oil exits) are "Open Centre" or "Closed Centre".

This is an important reference for Spare parts and Faultfinding.

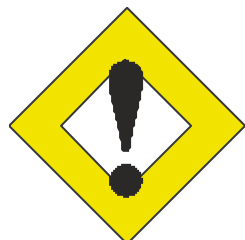


First T/B Slide units were SB 6713 and SB 6789.



FRONT VALVE

REAR VALVE



Circuits may be different for different units.